

Public Health Training Prospectus

2024



Why choose Oldham Council?

From a registrar perspective...

“Oldham is a fantastic place to be a registrar at any stage. I was able to gain some valuable leadership experience, developing projects around health checks and team working. I was also able to work on some strategic pieces such as teenage pregnancy and health inequalities. Overall though the best thing about Oldham is the team - they are so friendly and welcoming, I really felt at home in Oldham”.

“Oldham has such an amazing Public Health team! There’s so much enthusiasm and a genuine commitment to improving people’s lives, and it’s probably the most welcoming place I’ve worked.”

“Oldham is a brilliant Local Authority placement, with varied opportunities for registrars at all levels. I came after time out of programme and working in the supportive Public Health team helped me to build back my confidence and transition into leadership roles. I’ll really miss it when I leave!”



Introduction to Oldham



The borough of Oldham is situated in North West England and is part of Greater Manchester.

We are five miles away from Manchester city centre and close to superb countryside; almost a quarter of the borough is in the Peak District National Park. No household in the borough is more than two miles from open countryside.

We have diverse communities within Oldham, made up of people from a range of ages, backgrounds and cultures.

Introduction to Oldham

Population

243,912

The total population of Oldham (2022 ONS Mid-Year Estimates)

Growth

5.2%

The percentage that Oldham's population is expected to increase by 2033.

Deprivation

35.0%

The percentage of areas in Oldham among the 10% most deprived areas in England.



Oldham
Council

Introduction to Oldham

- **25.0%** aged under 18
- **58.8%** aged 18-64
- **16.2%** aged 65+

Breakdown of Population by Ethnic Group 2021

	Oldham	Greater Manchester	England
White	68.1% (77.5%)	76.4% (83.8%)	81% (85.5%)
Pakistani	13.5% (10.1%)	7.3% (4.8%)	2.8% (2.1%)
Bangladeshi	9% (7.3%)	1.6% (1.3%)	1.1% (0.8%)
Indian	0.7% (0.7%)	2.4% (2.0%)	3.3% (2.6%)
Black (African/Caribbean)	3.4% (1.2%)	4.7% (2.8%)	4.2% (3.4%)
Mixed and Other	5.3% (3.2%)	7.6% (5.4%)	7.6% (5.4%)
All Ethnic Minorities (Non-White)	31.9% (22.5%)	23.6% (16.3%)	19% (14.3%)

Source: ONS Census 2021

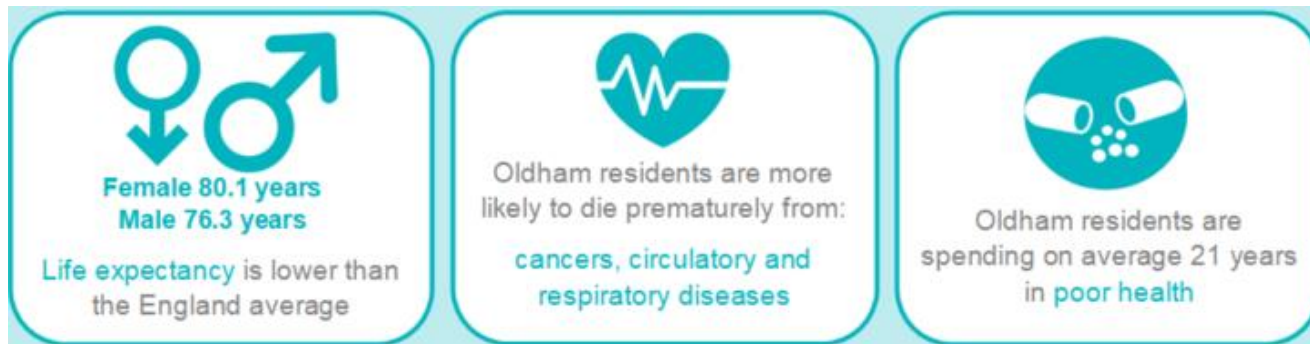


Oldham
Council

Public health in Oldham

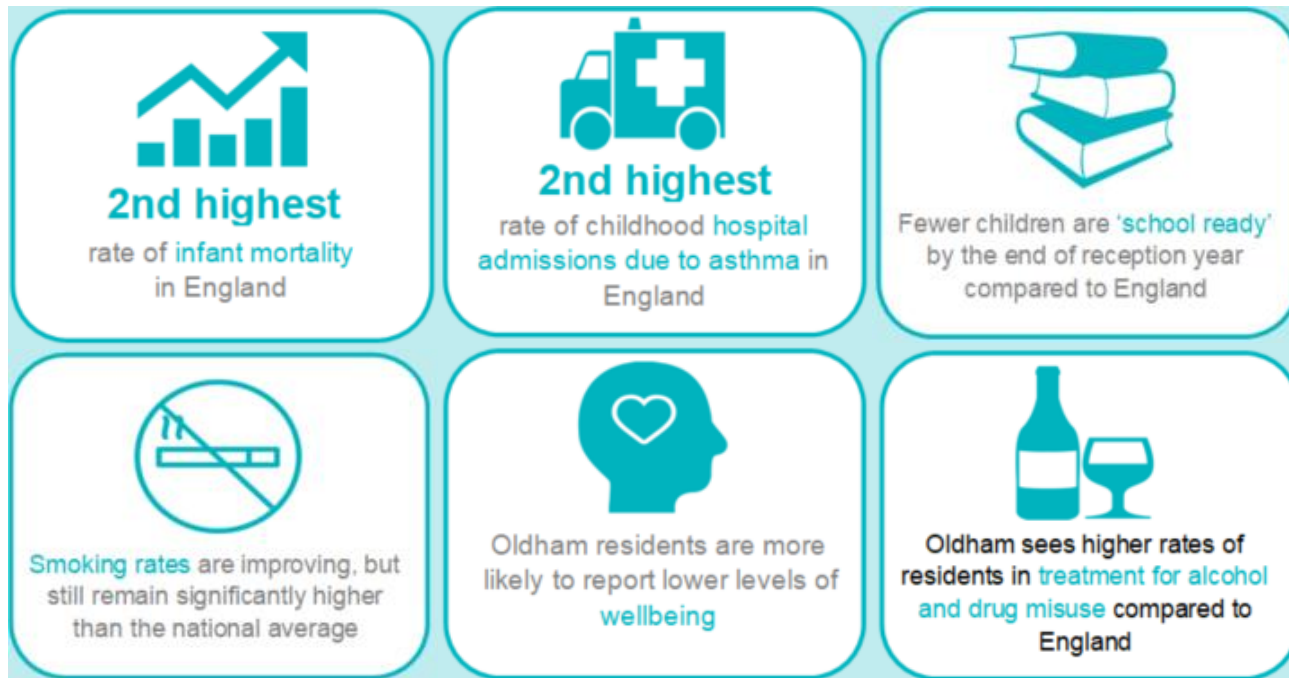
Our population's health is influenced by social inequality including poverty, unemployment, and disadvantage because of ethnicity. The wider determinants of health such as education, housing and transport are critical factors too.

Life expectancy for both men and women remains lower than the England average and life expectancy for residents in Alexandra ward is almost 13 years lower than for Saddleworth South.



Public health in Oldham

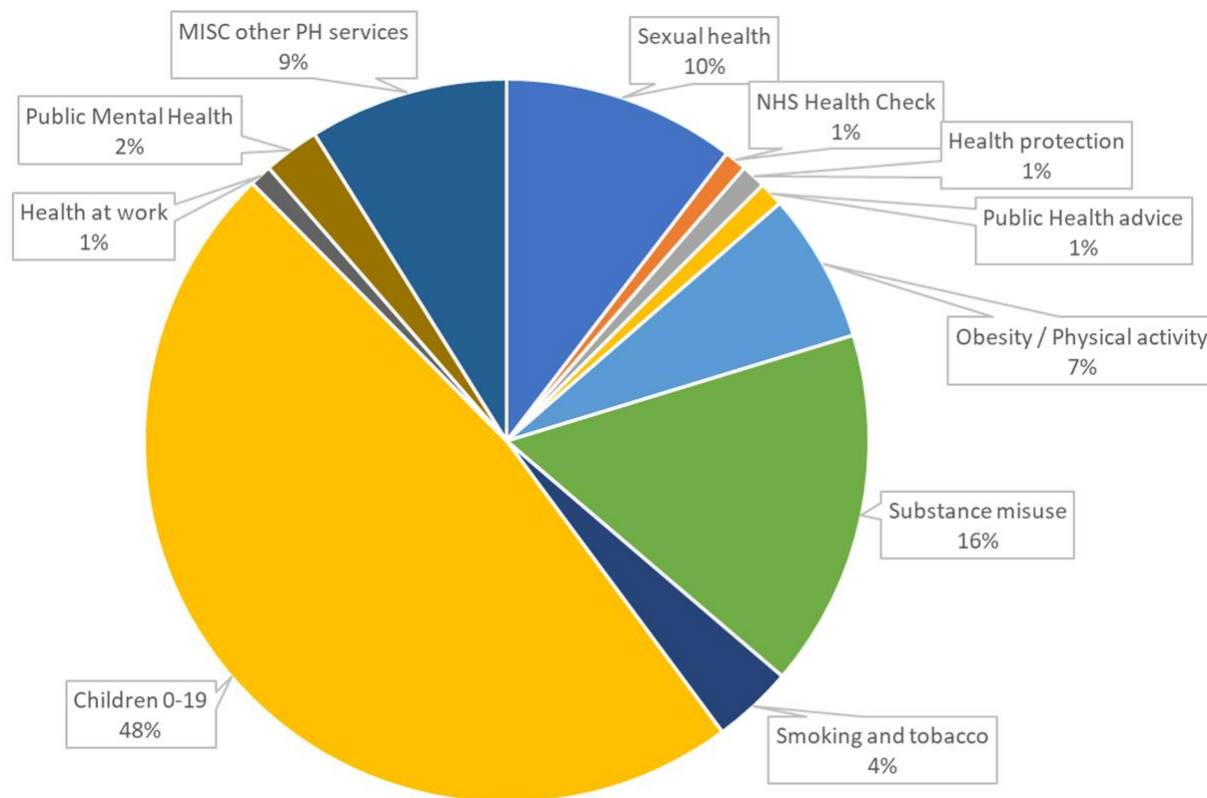
Whilst we are seeing improvements, many indicators suggest worse health and wellbeing than in the rest of the region and the national average.



More information is available [here](#)

Public health in Oldham

Budget allocation 23/24



Oldham's Public Health team

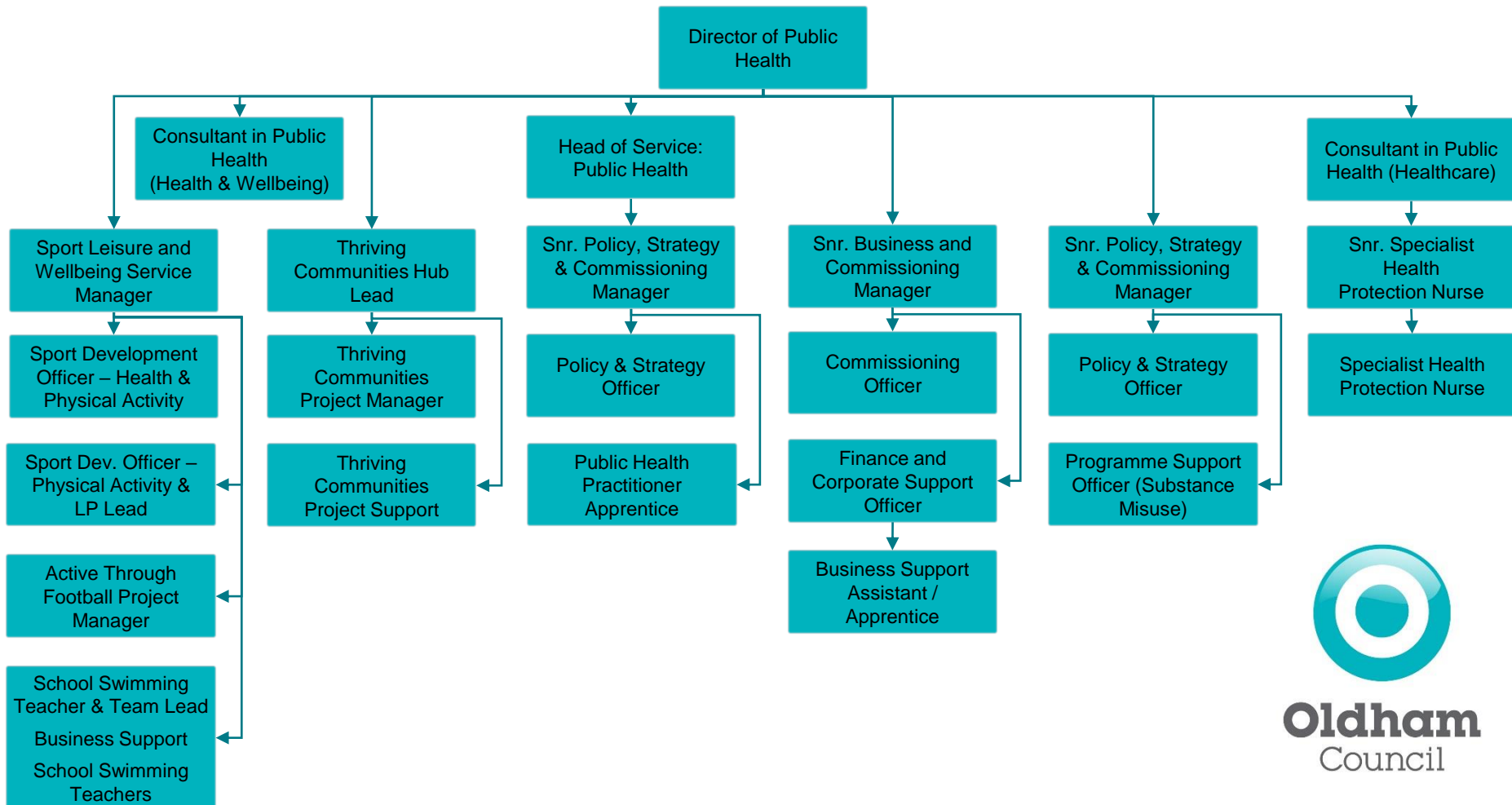
Oldham is a co-operative borough. This represents a commitment to developing a co-operative future where citizens, partners and staff work together to improve the borough and create a confident and ambitious place. It means working in a way which helps to empower residents to take greater control of their own lives and gets the maximum benefit from the resources that are available to the community and public sector.

The Public Health department sits within the Council's People Directorate, alongside Sport, Leisure, Wellbeing, and Thriving Communities.

The Public Health team comprises around 25 people and is led by the Director of Public Health, Rebecca Fletcher, with support from two Consultants in Public Health and the Head of Service.



Oldham's Public Health team



The training experience

Educational supervision

We currently have two educational supervisors, Dr Rebecca Fletcher and Dr Charlotte Stevenson, and we have capacity to host up to 3 StRs. Both Rebecca and Charlotte trained in the North West and have a good understanding of the training scheme, and both are also accredited trainers.

Dr Rebecca Fletcher is the DPH and is particularly interested in system leadership, sexual health, and children and young people.

Dr Charlotte Stevenson holds the post of Consultant in Public Health (Healthcare) and leads on Healthcare Public Health and Health Protection. Charlotte is also the Lead Trainer.

The training experience

Practical considerations

Our trainees join the rest of the Public Health team based in the Oldham Council Offices in the Spindles Shopping Centre, Oldham town centre. The office is a short walk from bus and tram services, and is a short drive from the M62. Car parking is available on site and nearby. Shower facilities are available.

Hybrid, flexible working is the norm, and we encourage 2-3 days (pro rata full time) working in the office to build relationships with other members of the team; more days can be accommodated if preferred. The team are expected to keep their Outlook calendars up to date and be contactable during working hours.

Teams and SharePoint are used regularly for collaboration and connection.



The training experience

Opportunities

We can support work across the breadth of public health, with good exposure to both healthcare public health and health protection in a local authority setting.

The population is diverse and many communities experience multiple disadvantages; work to reduce health inequalities for residents is core to our ambition for Oldham and offers many opportunities for StRs. We also offer a unique opportunity to work in close partnership with a strong voluntary and community sector, and in a complex political environment.

For insight into our priorities, it may be useful to review the current [Health and Wellbeing Strategy](#).



The training experience

Opportunities

Previous StR projects have included:

- Suicide Prevention Strategy
- Health and Wellbeing Strategy
- Public Health investment review
- Leadership of measles/MMR work across the system

Contact information

For further information about public health training in Oldham, please contact:

Dr Charlotte Stevenson

Consultant in Public Health

Charlotte.Stevenson@oldham.gov.uk

Oldham Council

Oldham Council Offices

Spindles Shopping Centre

George Street

Oldham, OL1 1HD

