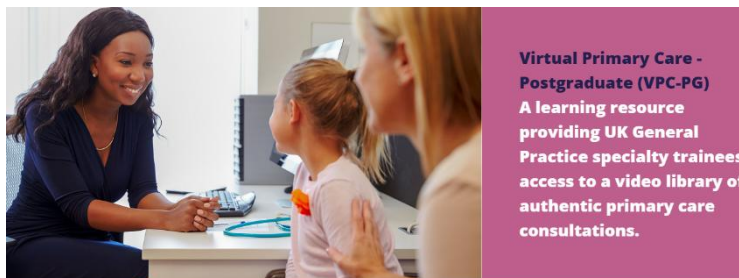


Virtual Primary Care for GPST1s

What is Virtual Primary Care?

Virtual Primary Care is an exciting new resource consisting of 150 diverse, real life primary care consultations videos covering a wide range of clinical topics.



Every consultation on this searchable database has been tagged for clinical and educational content and is accompanied by a brief summary, associated learning points, references and suggested student activities. The resource uses video consultations provided by the award-winning TV production company Knickerbockerglory, producers of the Channel 5 television series GPs: Behind Closed Doors.

VPC was originally developed in response to the impact of the COVID-19 pandemic on access to primary care experience in UK medical schools. It is a collaboration between the Medical School Council and the Society for Academic Primary Care Heads of GP Teaching Group. VPC-PG is now available to UK GPST1s as part of an NHS England and NHS Education for Scotland pilot scheme.

Who Can Access Virtual Primary Care?

We have procured licences for all GPST1s in and their GP Clinical Supervisor's initially, and we are keen to see this resource used in day-to-day teaching, tutorials and for trainees to familiarise themselves with a wide variety of GP presentations.

You will only have access to the Virtual Primary Care site in your ST1 phase so please do take advantage of this fantastic resource.

How do I sign up?

To enable you to use the Virtual Primary Care site you will firstly be required to complete the following End User Agreement by clicking on the following link [Virtual Primary Care Terms and Conditions for each End User \(North West\)](#) and providing us with an NHS email address. We will then be in touch further details on how to log in.

Please note you will not gain access if you do not have an NHS email address.

Please contact england.primarycareschool.nw@nhs.net with any queries